

Standard-Duty & Heavy-Duty Manure Spreaders



MS11 Series • MS12 Series

Check out the line of Frontier Standard-duty Manure Spreaders

They're built tough for long-life. And they deliver excellent spreading performance no matter how tough the conditions. Best of all, they're ready and waiting at your local John Deere dealership.

These compact spreaders are perfect for any small livestock or horse operation. They match up neatly to any utility tractor. One can pair up the combination that makes maneuvering in and out of confined spaces easy.

All Frontier Standard-duty Spreaders are constructed of corrosion-resistant galvanized steel for years of trouble-free service. Plus, they feature a poly-bonded floor to reduce main apron drag and minimize the power needed to move the load efficiently. This poly-bonded floor comes with a warranty.³

Heavy-duty paddle beater assemblies assure aggressive shredding action. Large-diameter beaters deliver greater tip-speed for wide, even, chunk-free spread patterns.

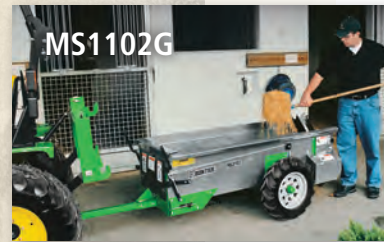
Learn why durable Frontier Standard-duty Manure Spreaders are ideal for small acreages and budgets. See your John Deere dealer today.

www.BuyFrontier.com
www.BuyFrontier.ca

U.S.A.
Canada

Bushel Capacity

Capacity	Struck Level (cu. ft.)	Heaped (bushel, old rating)
MS1102G	13.6	25
MS1105G	35	50
MS1108G	53	80
MS1108	53	80
MS1112	75	125
MS1117	105	175



MS1102G Ground-driven

- 20 in. (50.8 cm) diameter beater provides even spread of material
- Constructed of corrosion-resistant galvanized steel for years of trouble-free service
- Poly-bonded floor comes with a warranty³
- 5 in. x 12 in. (12.7 cm x 30.5 cm) deep lug tires provide positive ground drive and traction
- Apron is easily engaged/disengaged with controls located on both sides of spreader
- Fine-spread rear pan is optional



MS1105G Ground-driven

- Heavy-duty 8-paddle beater assembly for aggressive shredding action
- Constructed of corrosion-resistant galvanized steel for years of trouble-free service
- Poly-bonded floor comes with a warranty³
- 7.6 in. x 15 in. (19.3 cm x 38.1 cm) deep lug tires provide positive ground drive and traction
- Chain-driven beater for efficient, non-stop spreading
- Adjustable ratchet-drive for main apron
- Beater and main apron is easily engaged by simply lowering the control lever
- Fine-spread rear pan is optional



MS1108G Ground-driven / MS1108 PTO-driven

- Heavy-duty 10-paddle beater assembly assures aggressive shredding action for wide spread patterns
- Constructed of corrosion-resistant galvanized steel for years of trouble-free service
- Poly-bonded floor comes with a warranty³
- 6.7 in. x 15 in. (17 cm x 38.1 cm) deep lug tires provide excellent traction (PTO-driven only)
- 7.6 in. x 15 in. (19.3 cm x 38.1 cm) deep lug tires provide positive ground drive (Ground driven only)
- Heavy-duty gearbox and drive provides greater reliability (PTO-driven only)
- Fine-spread rear pan is optional

Specifications

11 Series Manure Spreader Specifications

Model Number	MS1102G	MS1105G	MS1108G	MS1108	MS1112	MS1117
Capacity-heaped bushels (old rating)	25	50	80	80	125	175
Capacity-cu. ft. (struck level)	13.6	35	47	53	75	105
Top of flare width	28.5 in. (73 cm)	36 in. (91 cm)	48 in. (122 cm)	48 in. (122 cm)	54 in. (137 cm)	63.5 in. (161 cm)
Inside width	22 in. (56 cm)	36 in. (91 cm)	48 in. (122 cm)	48 in. (122 cm)	48 in. (122 cm)	54 in. (137 cm)
Inside length	6 ft. (183 cm)	8 ft. 1in. (264 cm)	7 ft. 1 in. (216 cm)	7 ft. 4 in. (223 cm)	10 ft. 6 in. (320 cm)	11 ft. 1 in. (338 cm)
Inside depth	17 in. (43 cm)	17.5 in. (44 cm)	17.5 in. (44 cm)	19.75 in. (50 cm)	22 in. (56 cm)	25.75 in. (65 cm)
Overall length	9 ft. 1 in. (277 cm)	13 ft. 4 in. (406 cm)	13 ft. 4 in. (406 cm)	13 ft. 10 in. (422 cm)	15 ft. 3 in. (465 cm)	17 ft. 8 in. (538 cm)
Overall width with standard tires	42 in. (107 cm)	58 in. (147 cm)	72 in. (183 cm)	77 in. (193 cm)	80 in. (203 cm)	83.5 in. (212 cm)
Overall loading height-top of flare ¹	30 in. (76 cm)	32.5 in. (82 cm)	32 in. (84 cm)	35 in. (89 cm)	43.5 in. (110 cm)	45.5 in. (116 cm)
Overall height with hydraulic endgate	n/a	n/a	n/a	n/a	n/a	49 in.
Hub style	Greaseable	Greaseable	Greaseable	Greaseable	Greaseable	Greaseable
Axle	Single	Single	Single	Single	Single	Single
Spindle size	1.25 in. (3 cm)	1.75 in. (4 cm)	2 in. (5 cm)	2 in. (5 cm)	2 in. (5 cm)	2 in. (5 cm)
Standard tire size	6.00 x 12	7.60 x 15	7.60 x 15	6.70 x 15	10.00 x 15	10R x 22.5
Diameter of beater	20 in. (51 cm)	17.5 in. (44 cm)	18.5 in. (47 cm)	18.5 in. (47 cm)	22 in. (50 cm)	27 in. (68 cm)
Upper beater	n/a	n/a	n/a	n/a	n/a	n/a
Number of paddles	8	8	10	10	10	8
Main apron chain (type)	55	62	67H	67H	67XH	T-rod
Hydraulic endgate	n/a	n/a	n/a	n/a	n/a	optional
Box construction	Corrosion resistant galvanized steel	Corrosion resistant galvanized steel	Corrosion resistant galvanized steel	Corrosion resistant galvanized steel	Corrosion resistant galvanized steel	Corrosion resistant galvanized steel
Floor construction	Bonded poly	Bonded poly	Bonded poly	Bonded poly	Bonded poly	Bonded poly
Drive systems - apron and beater	Ground driven / adjustable ratchet drive	Ground driven / adjustable ratchet drive	Ground driven / adjustable ratchet drive	PTO driven / gearbox, 2 speed PTO	PTO driven / gearbox, 2 speed PTO	PTO driven / gearbox, 2 speed PTO
Rear pan	Optional	Optional	Optional	Optional	Optional	Optional
PTO speed (rpm)	n/a	n/a	n/a	540	540	540
Towing unit minimum weight ²	961 lb. (436 kg)	2,177 lb. (987 kg)	2,851 lb. (1,293 kg)	3,282 lb. (1,489 kg)	4,547 lb. (2062 kg)	5,672 lb. (2,573 kg)
Swing-away jack	n/a	Standard	Standard	Standard	Standard	Standard
Weight with tires	350 lb. (159 kg)	790 lb. (358 kg)	975 lb. (342 kg)	1,140 lb. (517 kg)	1,600 lb. (726 kg)	2,030 lb. (921 kg)
Warranty ³	1 year	1 year	1 year	1 year	1 year	1 year

¹ Overall height to top beater. ² If towed equipment does not have brakes, do not travel more than 32 km/h (20 mph) and do not tow loads more than 1.5 times the towing vehicle weight. ³ Hour and/or usage limitations may apply. See Warranty for new John Deere Agricultural Equipment or contact your local dealer for details.

MS1112 PTO-driven



- Heavy-duty 10-paddle beater assembly assures aggressive shredding action for wide spread patterns
- Constructed of corrosion-resistant galvanized steel for years of trouble-free service
- Poly-bonded floor comes with a warranty³
- Heavy-duty worm gear drive provides positive drive and long life
- Heavy-duty hitch and frame withstands stress of heavy loads and rough field conditions
- Fine-spread rear pan is optional

MS1117 PTO-driven



- 27 in. (68.6 cm) diameter beater covers more area from top to bottom, delivers greater tip-speed, chunk-free spread patterns
- Constructed of corrosion-resistant galvanized steel for years of trouble-free service
- Poly-bonded floor comes with a warranty³
- Two-speed apron drive includes low speed, high speed, and clean-out mode
- Easily adjust main apron by simply loosening the two-side bolts and pulling up the long bolt
- Optional hydraulic endgate/optional top beater to handle high-heaped material
- Fine-spread rear pan is optional

Frontier Manure Spreaders: Built tough for the long haul

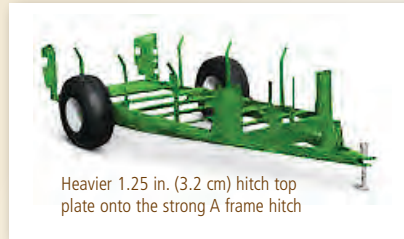
Frontier offers Heavy-duty Manure Spreaders with seven models from 235-bushel to 660-bushel capacity. So, there's a rugged Frontier spreader that's just right for your operation. All available exclusively through your John Deere dealer.

These spreaders boast one of the largest beaters on the market, 29 inches (73.6 cm) in diameter, for wide uniform spread patterns. Various paddle assemblies deliver greater spreading control; blunt for widespread, and sharp, ripper-type paddles for more aggressive shredding action. An optional top beater makes easy work of high-heaped loads.

Built-in strength for long life. Frontier spreaders are constructed on a heavy-duty welded frame, reinforced with heavy floor supports and side stakes for strength and durability. The entire spreader box is constructed for easy cleaning and minimal freeze up, and comes with a warranty.³ Check out these tough-built spreaders at your local John Deere dealership today.



Heavy-duty Manure Spreader Features



Heavier 1.25 in. (3.2 cm) hitch top plate onto the strong A frame hitch

Rugged, heavy-duty construction

Strong all-welded frame features heavy-duty floor and side stakes, and wrap-around steel front corners. Rear main-beater side panels are welded to durable 5-inch (12.7 cm) U-channel side members for strength and reliability.



Years of dependable service

Spreader boxes are constructed of materials to ensure long life. Floor and sides come with a warranty.³

Easy cleaning, smooth unloading

Entire spreader box is poly style material for easy cleaning and minimal freeze up, reducing the amount of torque needed to move heavier loads.



Versatile spreading action

Paddle assemblies match your material; blunt for wide spread patterns, and sharp, ripper-type paddles for more aggressive shredding action.



Hydraulic endgate

Helps contain high-moisture loads and prevents spillage during transport. (Optional on MS1223 and MS1227, standard on all other heavy-duty models.)

www.BuyFrontier.com
www.BuyFrontier.ca

U.S.A.
Canada



Two-speed apron drive

Includes low speed, high speed, and clean out mode. (Standard on MS1223, MS1227, MS1231, MS1237, and MS1243.)



Efficient load movement

Strong, double main-apron chain handles heavy loads with ease. (Standard on MS1256 and MS1266)



Hydraulic apron drive

Move load at variable speed with a hydraulic apron drive standard on MS1256 and MS1266. Optional feature on other MS12 Series Heavy duty Spreader.



Tackle high-heaped loads

Top beater makes easy work of high-heaped loads. (Standard on MS1243, MS1256, and MS1266, optional on all other heavy-duty models.)

Excellent cutting coverage

With one of the largest beaters on the market at a diameter of 29 in. (73.7 cm). These spreaders cover more area from top to bottom to handle big loads with ease. Fast tip-speed provides a wide, uniform spread.



Easy apron adjustment

Adjust the main apron by simply loosening the two side bolts and pulling up the long bolt. Simple and fast.

Longer component life

Apron idler sprockets are made from rugged cast steel alloy. Longer sprocket life.

Heavy-duty manure spreader features



Heavy-duty spreaders from 235-bushel to 660-bushel capacity to fit your operation.



Top beater tackles high-heaped loads. Standard on 430-bushel, 560-bushel, and 660-bushel spreaders.



A hydraulic endgate is ideal for high-moisture loads. Standard on 310-bushel to 660-bushel spreaders.

Bushel Capacity and Unload Speed

Capacity	Struck Level (cu. ft.)	Heaped (bushel, old rating)
MS1223	143	235
MS1227	167	270
MS1231	185	310
MS1237	235	370
MS1243	275	430
MS1256	353	560
MS1266	479	660

Unloading Speed (per minute)	High Speed	Low Speed
MS1223 2-speed gearbox	8 ft. 9 in. (2.67 m)	4 ft. 9 in. (1.45 m)
MS1227 2-speed gearbox	8 ft. 9 in. (2.67 m)	4 ft. 9 in. (1.45 m)
MS1231 2-speed chain drive	8 ft. 8.5 in. (2.65 m)	4 ft. 8.5 in. (1.44 m)
MS1237 2-speed chain drive	8 ft. 8.5 in. (2.65 m)	4 ft. 8.5 in. (1.44 m)
MS1243 2-speed chain drive	8 ft. 8.5 in. (2.65 m)	4 ft. 8.5 in. (1.44 m)
MS1256 Variable-speed hydraulic drive	0 - 17 ft. 6 in. (0 - 5.18 m) @ 16 GPM (no load)	
MS1266 Variable-speed hydraulic drive	0 - 17 ft. 6 in. (0 - 5.18 m) @ 16 GPM (no load)	

Design protects hydraulic lines

With the optional second hydraulic endgate cylinder, hydraulic lines run through a 3 in. x 3 in. (7.6 cm x 7.6 cm) tube under the floor, eliminating the chance for punctures, tears, and leaks. (Available on MS1223, MS1227, MS1231.)

12 Series Manure Spreader Specifications

Model Number	MS1223	MS1227	MS1231	MS1237
Top of flare width	68 in. (173 cm)	68 in. (173 cm)	68 in. (173 cm)	68 in. (173 cm)
Inside width	60 in. (152 cm)	60 in. (152 cm)	60 in. (152 cm)	60 in. (152 cm)
Inside length	12 ft. 1 in. (3.7 m)	14 ft. 1 in. (4.3 m)	15 ft. 7 in. (4.8 m)	16 ft. 6 in. (5.1 m)
Inside depth	28.375 in. (72 cm)	28.375 in. (72 cm)	28.375 in. (72 cm)	34.375 in. (87 cm)
Overall length	18 ft. 6 in. (5.7 m)	20 ft. 5.5 in. (6.3 m)	21 ft. 11.5 in. (6.69 m)	23 ft. 2.5 in. (6.7 m)
Overall width with standard tires	94.5 in. (240)	94.5 in. (240)	98 in. (249 cm)	98 in. (249 cm)
Overall loading height - top of flare ¹	51.5 in. (131 cm)	51.5 in. (131 cm)	51.5 in. (131 cm)	57.5 in. (146 cm)
Overall height with hydraulic endgate	55 in. (140 cm)	55 in. (140 cm)	55 in. (140 cm)	61 in. (155 cm)
Hub style	Greasable	Greasable	Greasable	Greasable
Axle	Single	Single	Tandem	Tandem
Spindle size	2 in. (5 cm)	2.5 in. (6.3 cm)	2.25 in. (6 cm)	2.5 in. (6.3 cm)
Standard tire size	295 x 22.5 recap	295 x 22.5 recap	295 x 22.5 recap	295 x 22.5 recap
Optional tire	16.5 x 16.1 floatation	16.5 x 16.1 floatation	16.5 x 16.1 floatation	16.5 x 16.1 floatation
Diameter of beater	29 in. (74 cm)	29 in. (74 cm)	29 in. (74 cm)	29 in. (74 cm)
Upper beater	Optional	Optional	Optional	Optional
Number of paddles	14	14	14	14
Replaceable paddles	Yes	Yes	Yes	Yes
Main apron chain	T-rod	T-rod	T-rod	T-rod
Capacity - cu. ft. (struck level)	143	167	185	235
Capacity - heaped bushels (old rating)	235	270	310	370
Hydraulic endgate	Optional	Optional	Standard	Standard
Box construction	Fiberglass reinforced plywood	Fiberglass reinforced plywood	Fiberglass reinforced plywood	Fiberglass reinforced plywood
Floor construction	Bonded Poly	Bonded Poly	Solid virgin grade poly	Solid virgin grade poly
Drive systems - apron and beater	2-Speed PTO drive optional hydraulic	2-Speed PTO drive optional hydraulic	2-Speed PTO drive optional hydraulic	2-Speed PTO drive optional hydraulic
Rear pan	Standard	Standard	Standard	Standard
PTO speed (RPM)	540	540	540 / 1000 Optional	540 / 1000 Optional
Towing unit minimum weight ²	7,741 lb. (3,511 kg)	9,067 lb. (4,113 kg)	10,531 lb. (4,777 kg)	13,264 lb. (6,016 kg)
Swing-away jack	Standard	Standard	Standard	Standard
Weight with tires	2,890 lb. (1,311 kg)	3,230 lb. (1,495 kg)	4,190 lb. (1,101 kg)	4,190 lb. (1,101 kg)
Warranty ³	1 year	1 year	1 year	1 year

¹ Overall height to top beater. ² If towed equipment does not have brakes, do not travel more than 32 km/h (20 mph) and do not tow loads more than 1.5 times the towing vehicle weight. ³ Hour and/or usage limitations may apply. See Warranty for new John Deere Agricultural Equipment or contact your local dealer for details.



12 Series Manure Spreader Specifications

Model Number	MS1243	MS1256	MS1266
Top of flare width	68 in. (173 cm)	89.5 in. (227 cm)	89.5 in. (227 cm)
Inside width	60 in. (152 cm)	80 in. (203 cm)	80 in. (203 cm)
Inside length	16 ft. 6 in. (5.1 m)	17 ft. 5 in. (5.3 m)	17 ft. 5 in. (5.3 m)
Inside depth	40.375 in. (102 cm)	36 in. (91 cm)	49 in. (124 cm)
Overall length	23 ft. 2.5 in. (7.1 m)	26 ft. 10 in. (10.2 m)	26 ft. 10 in. (10.2 m)
Overall width with standard tires	112 in. (285 cm)	131 in. (333 cm)	131 in. (333 cm)
Overall loading height - top of flare ¹	63.5 in. (161 cm)	63.5 in. (161 cm)	78.75 in. (200 cm)
Overall height with hydraulic endgate	63.5 in. (161 cm)	78 in. (198 cm)	83 in. (211 cm) ¹
Hub style	Greasable	Greasable	Oil bath
Axle	Tandem	Tandem	Tandem
Spindle size	2.5 in. (6 cm)	3 in. (8 cm)	3 in. (8 cm)
Standard tire size	16.1 x 16.5	425 x 22.5 Used truck tire	425 x 22.5 Used truck tire
Optional tire size	NA	600/50x22.5	NA
Diameter of beater	29 in. (74 cm)	29 in. (74 cm)	29 in. (74 cm)
Upper beater	Standard	Standard	Standard
Number of paddles	14	14	14
Replaceable paddles	Yes	Yes	Yes
Main apron chain	T-rod	T-bar	T-bar
Capacity - cu. ft. (struck level)	275	353	479
Capacity - heaped bushels (old rating)	430	560	660
Hydraulic endgate	Standard	Standard	Standard
Box construction	Fiberglass reinforced plywood	Fiberglass reinforced plywood	Fiberglass reinforced plywood
Floor construction	Solid virgin poly	Solid virgin poly	Solid virgin poly
Drive systems - apron and beater	2-Speed PTO drive optional hydraulic	Hydraulic drive on apron - PTO on beater	Hydraulic drive on apron - PTO on beater
Rear pan	Optional	Optional	Optional
PTO speed (RPM)	540 / 1000 Optional	1000	1000
Towing unit minimum weight ²	15,340 lb. (6,958 kg)	20,282 lb. (9,200 kg)	26,687 lb. (12,110 kg)
Swing-away jack	Standard	Standard	Standard
Weight with tires	5,220 lb. (2,368 kg)	8,140 lb. (3,692 kg)	9,600 lb. (4,354 kg)
Warranty ³	1 year	1 year	1 year



¹ Overall height to top beater

² If towed equipment does not have brakes, do not travel more than 20 mph (32 km/hr) and do not tow loads more than 1.5 times the towing vehicle weight.

³ Hour and/or usage limitations may apply. See Warranty for new John Deere™ Agricultural Equipment or contact your local dealer for complete details.

This literature has been compiled for worldwide circulation. While general information, pictures and descriptions are provided, some illustrations and text may include finance, credit, insurance, and product options/accessories available at an additional cost that may not be available in all regions. CONTACT YOUR LOCAL JOHN DEERE™ DEALER FOR DETAILS. Frontier Equipment reserves the right to change specifications and design of products described in this literature without notice. John Deere, the leaping deer symbol, and John Deere's green and yellow trade dress are the trademarks of Deere & Company. Copyright 2018, Frontier Equipment



U.S.A.
Canada

www.BuyFrontier.com
www.BuyFrontier.ca